

HEALTH VILLAGE

A Florida Hospital Project

Guided by Planning
and Design

May 2007





1908



1920's



1960's



1980's



2008

future

Future
Florida Hospital

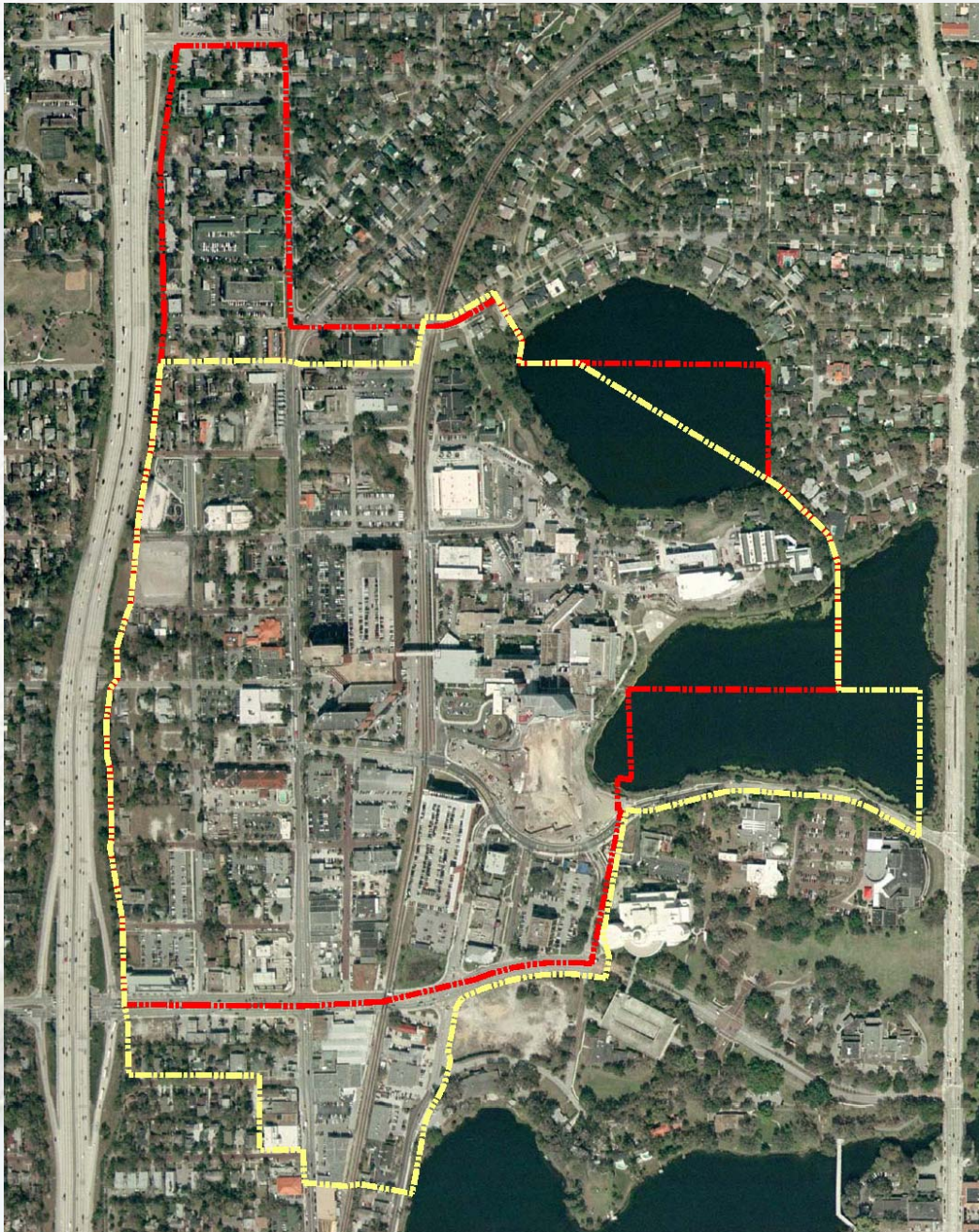
Continuing
Community
Commitment...

Health Village Team

Florida Hospital	
Tim Burrill	Rich Morrison
Jody Barry	Beth Thibodaux
Consultants	
Applicant / Legal GrayRobinson, PA Borron Owen, Jr.	Streetscape Foster Conant & Associates, Inc. Keith Oropeza
Project Management / Planning Davis & Associates Dick Davis Linda Dozier	Traffic Dyer, Riddle, Mills & Precourt, Inc. Steve Precourt Dawn Tuten
Civil Engineering Dyer, Riddle, Mills & Precourt, Inc. Christina Dixon	Economic Reporting Real Estate Research Consultants, Inc. Owen Beitsch Todd DeLong

It's a place where
Community Health
is the core value





Some basic details:

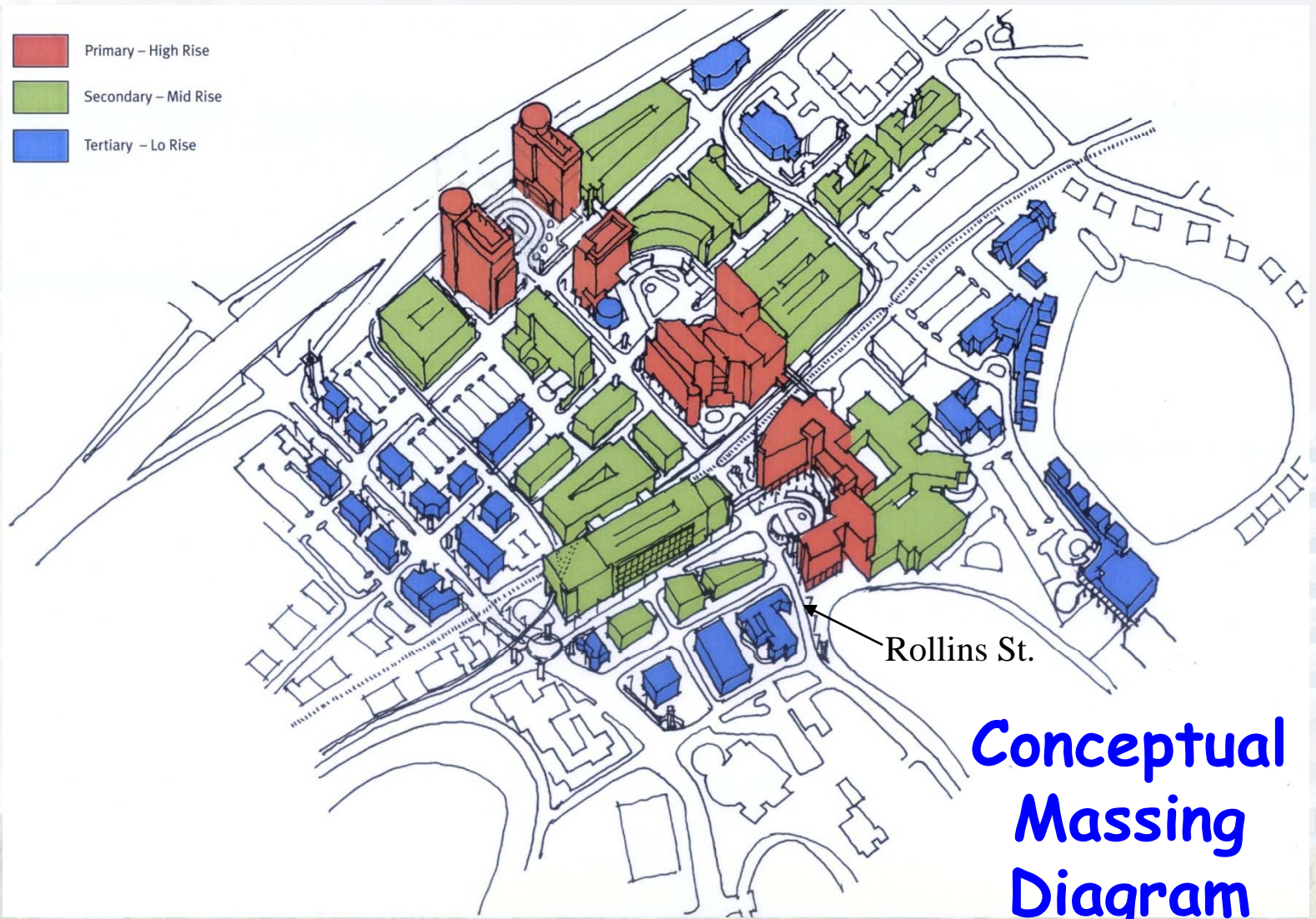
**DRI and
Planned Development**

**Planning Area
Boundary**



Current Boundary






Proposed Boundary

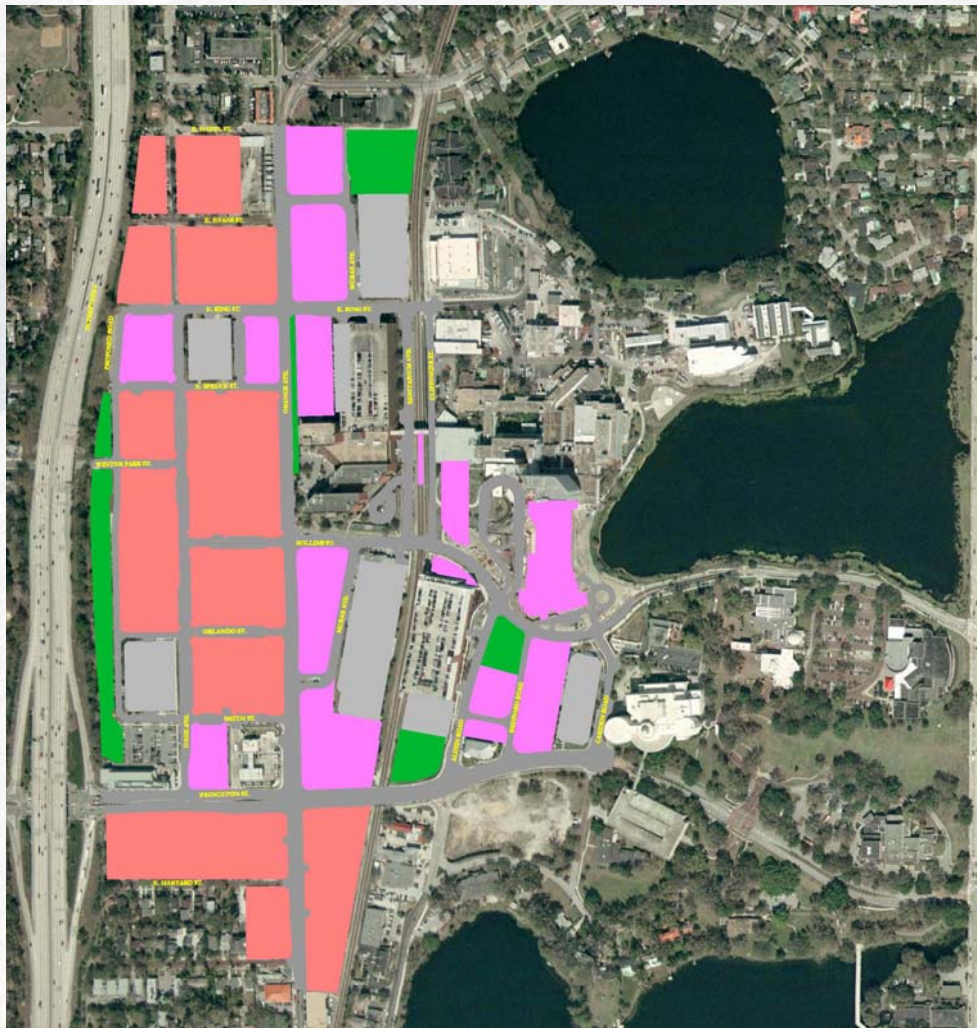


- Rollins Street is the urban core
- Core anchored east and west by architectural focal points
- Commuter rail station at CSX and Rollins Street

Conceptual PD Land Use Plan

Legend:

-  Hospital/Medical as Primary Use
Mixed Use as Secondary Use
-  Mixed Use as Primary Use
Hospital/Medical as Secondary Use
-  Parks/Retention
-  Parking Structure
-  Roadways



- Some road realignments proposed to reduce traffic congestion and facilitate urban development (subject to City approval)
- Alden Road main entrance to Hospital
- Princeton Street primary east/west road
- Orange Avenue primary north/south road
- CSX commuter rail line



Typical 60' Design Section

- Landscape separation between traffic lane and pedestrian walkway
- Shumard Oak - standard street shade tree

Illustrative Site Plan Orange Avenue

- Conceptual design for Orange Avenue
- Pedestrian friendly design
- Landscape separation between traffic lane and pedestrian walkway
- Provide wider sidewalk to improve/encourage pedestrian activity
- Provide retail shops or active office uses at street level
- Consolidate Orlando and Smith Streets into a single mid-block roadway to encourage pedestrian activity and reduce vehicular congestion





Commuter Rail Station Concept